

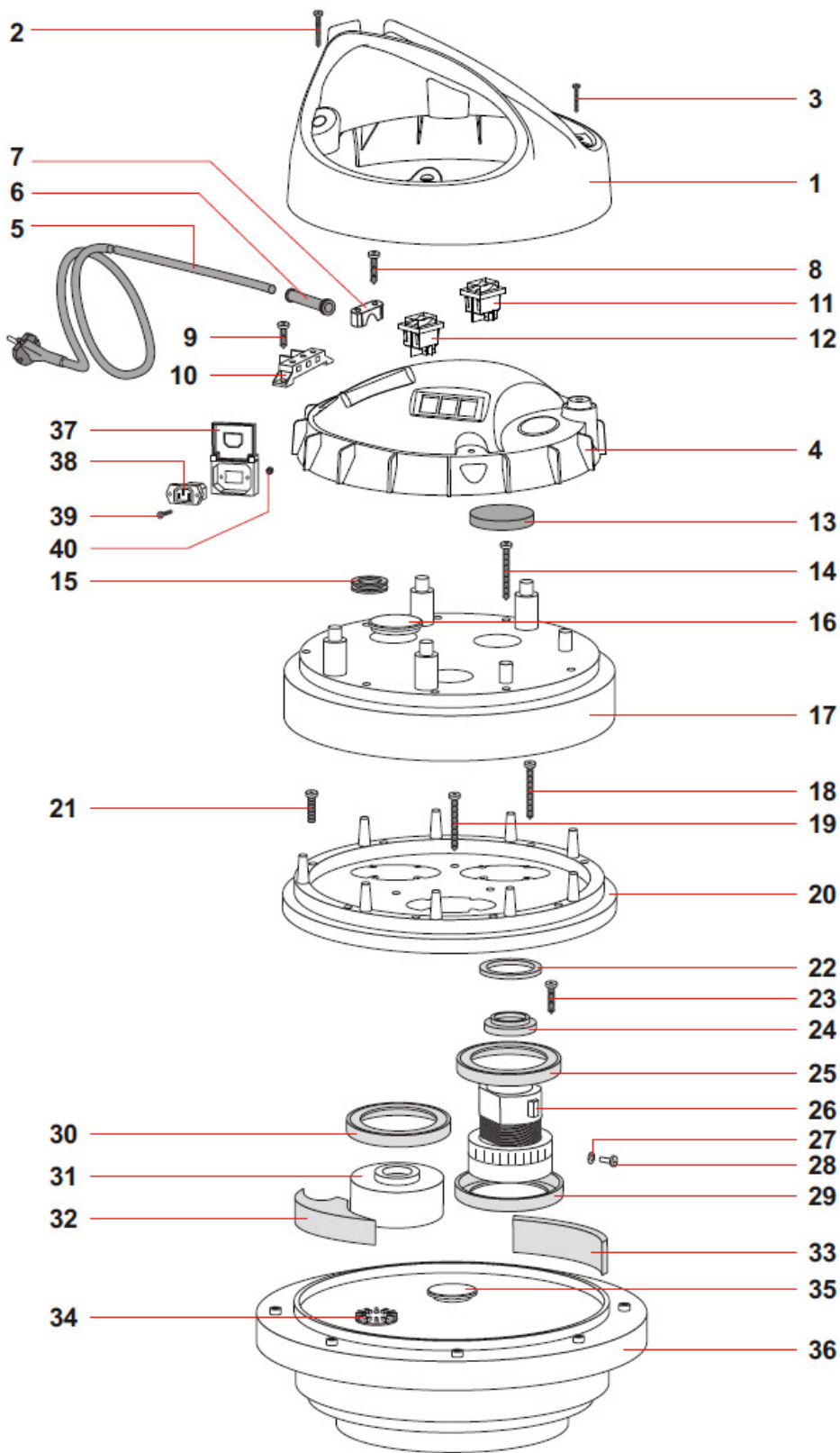


**Equipos Profesionales de Limpieza**

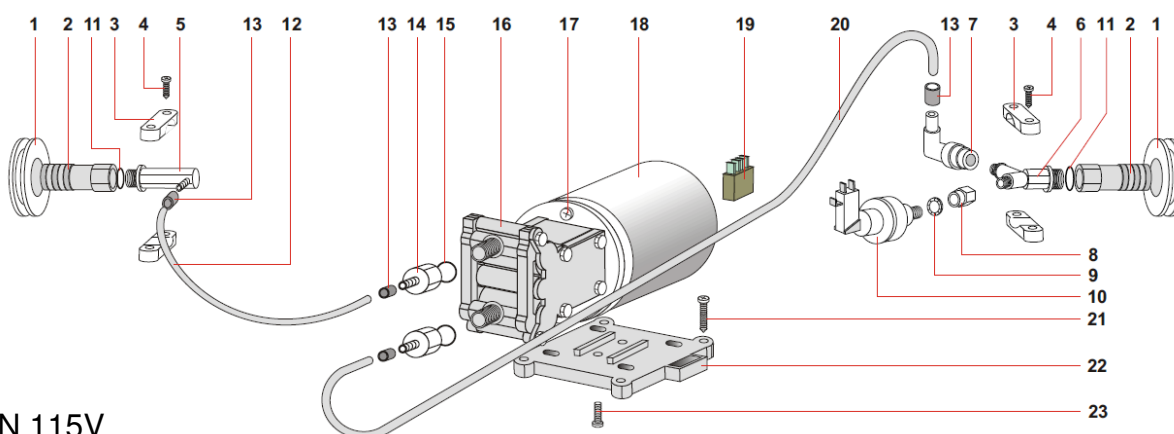


***Explosivos Drop - S***

CABEZAL DROP-S 120V



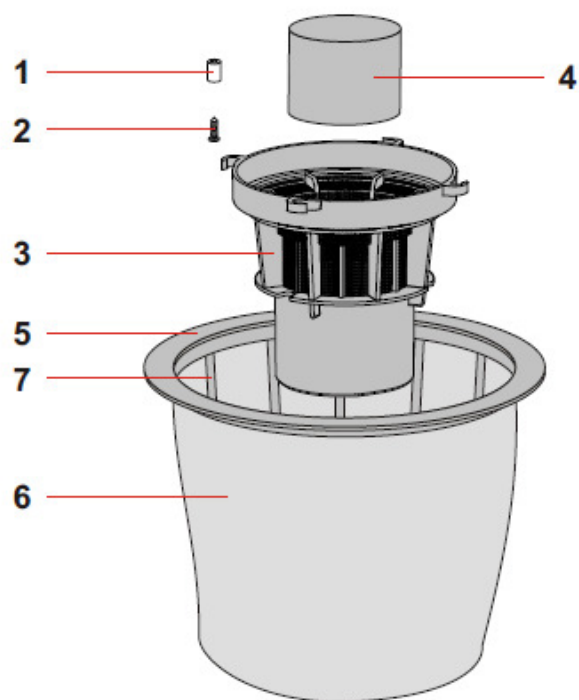
POS	REF	DESCRIPCION	Cant.
1	20723NE	HANDLE WINDLY 600 BLACK	1
2	2627	SCREW PAT TMT PHL 5X40 BLACK	2
3	3629	SCREW PAT TMT PHL 5X25 BLACK	2
4	20724GI 3IPS	WINDLY COVER 600 YELLOW 3SW/ADD.SOC	1
5	7628	ELEC TR.CABLE E.3X14AWG SJTW MT8,5	1
6	138/L	FAIRLEAD	1
7	139	CABLE CLAMP	1
8	1006	SCREW PFU TMT PHL 5X20 BLACK	2
9	1005	SCR EW PAT TMT PHL 5X14 ZN BLACK	2
10	7008 S/RAD	ELEC TR.KIT EXTR.6 00 "S"PUMP	1
11	484	ANTISPLASH RED LIGHT SWITCHER	2
12	756	ANTISPLASH GREEN LIGHT SWITCH	1
13	3937	FILTER MTP/65 H=15 D.95	2
14	3273	SCREW PAT TMT PHL 5X55 BLACK	9
15	1502	GUIDIN G SLIT FOR QUICK COUPLING	1
16	3383	COVERING CAP	1
17	3708NE	COVERING STORM BLACK	1
18	2627	SCREW PAT TMT PHL 5X40 BLACK	9
19	2627	SCREW PAT TMT PHL 5X40 BLACK	3
20	2937NE	MOTOR-FASTENER NEV.600 BLACK	1
21	3189	SCREW M 5X30 UNI 7687	1
22	3969	WASHER H8 D85X65	2
23	1006	SCREW PFU TMT PHL 5X20 BLACK	8
24	310	PLASTIC RING FOR MOTOR H=15	2
25	3901	"L" GASKET W/O HOLES H=5,5	2
26	1119 S	MOTOR 800 W.120 V.60 HZ SELF-EXT.	2
27	1024	GROVER WASHER M4	2
28	1064	SCREW M 4X8	2
29	3901	"L" GASKET W/O HOLES H=5,5	2
30	3901	"L" GASKET W/O HOLES H=5,5	1
31	3451	FEIGNED MOTOR	1
32	3454	ANTINOISE TR IANGLE H=51	3
33	3456	GASKET MTP/30 AU-AD 50X10X85	3
34	468	AUTOMATIC VALVE	2
35	3519	BASE CAP	1
36	3108 PGI	BASE 600/400 W/STAT.PLATE YELLOW	1
37	2184	ADD.SOC KET PR OTECTION	1
38	98	SCREWED ADDITIONAL SOCKET	1
39	1044	SCREW TSP M 3X25 UNI 6109	2
40	1046	NUT M 3 UNI 5588	2



BOMBA DE SOLUCION 115V

POS.	REF.	DESCRIPCION	Cant.
1	6082	GUIDING SLIT LAVA	2
2	3689/OTT	QUICK SOCKET 1/4"F	2
3	2604	FIXING BOLT CONN.	4
4	1979	SCREW PFU TMT PHL 5X25 ZN BLACK	4
5	6395	PLAST."L" COUPLING	1
6	3096	PL AST."Y" COUPL ING 2 WAYS	1
7	3747	ELBOW PLAST. COUPLING 1/8"F-PG5,2	1
8	689	NIPPLE 1/4" F. 1/8" F.	1
9	3722	NOTCHED WASHER M 10 UNI 6798	1
10	3919 SG	PRESSURE SWITCH GP110 8BAR (GREEN)	1
11	1610	O RING 9	2

12	723	HYDROLITIC TUBE 8X5 PER METER BLACK	1
13	3171	PLAST.CLIP D.8	4
14	3921	RIGHT P LAST. COU PLIN G 3/8"F-PG 5,2	2
15	1711	O RING 22,2X16,2X3	2
16	695SG	SG PUMPW/OUT PRESS	1
17	1008	SCREW TMT M 5X9,5 PH	4
18	3989/C	MOT.90W 115V 1000 RPM ALMES	1
19	1793	RECTIFIER	1
20	723	HYDROLITIC TUBE 8X5 PER METER BLACK	1
21	1050	SCREW PAT TMT PHL 5X35 BLACK	4
22	1794	MOTOR SUPP ORT	1
23	1008	SCREW TMT M 5X9,5 PH	2

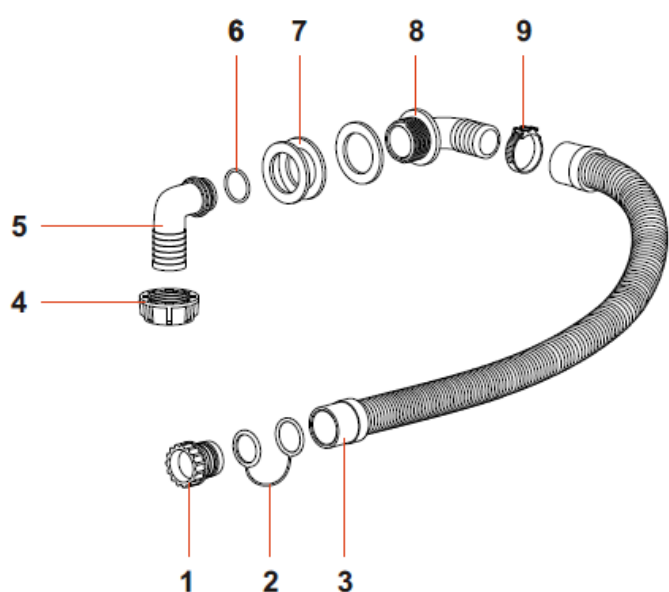
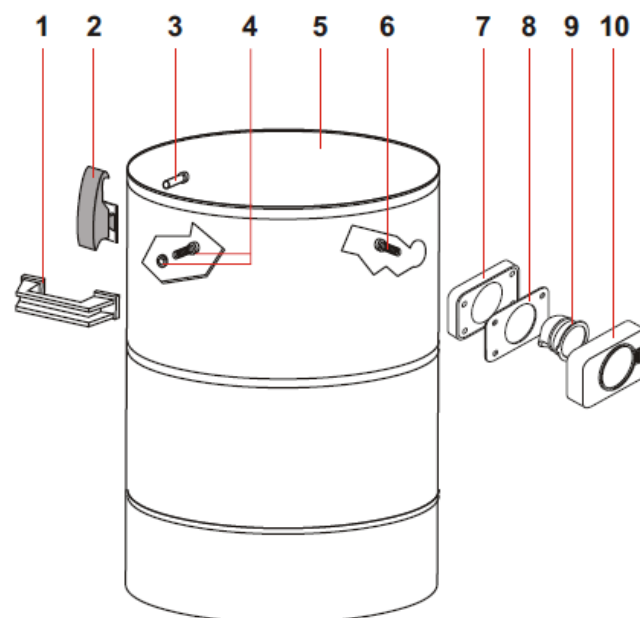


**ENSAMBLE FILTRO CONICO**

POS.	REF.	DESCRIPCION	Cant.
1	3706	INLET R155 BL ACK W/IPC-GREEN BUTTON	4
2	3724	SCREW PAT TMT PHL 5X25	4
3	21243NE	NET ANTIFOAM BODY HIGH	1
4	2676-1 G	HIGH FLOAT 99 W/GASKET 37 SHA	1
5	473	FILTER RING 400	1
6	2845 SAN	CONIC.POLYESTER FILTER 400	1
7	2833-1	CONICAL BASKET 400	1

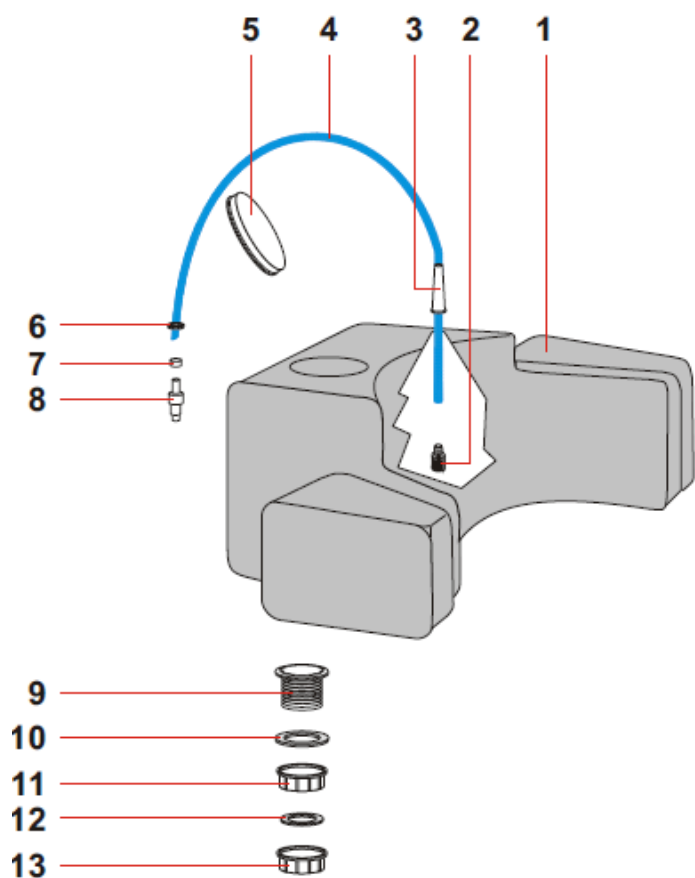
**TANQUE DROP AISI 304**

POS	REF.	DESCRIPCION	Cant.
1	2993-1NE	BLACK HANDLE	2
2	1847/SNE	COMPLETE PLASTIC HOOK BLACK	2
3	1301	RIVET 5X11	4
4	3968	COMPLETE SEAL W/SCREW L=25	4
5	946	TANK GARAGE/CALIFORNIA AIS I 304	1
6	1026	SCREW PAT TMT PHL 5X30 BLACK	4
7	2586NE	GASKET R 205 BL ACK	1
8	2846	GASKET D.38	1
9	2593	DEFL ECTOR 99	1
10	2652 ANE GI	COMP.INLET R155 BLACK W/YELL.SWITCH	1



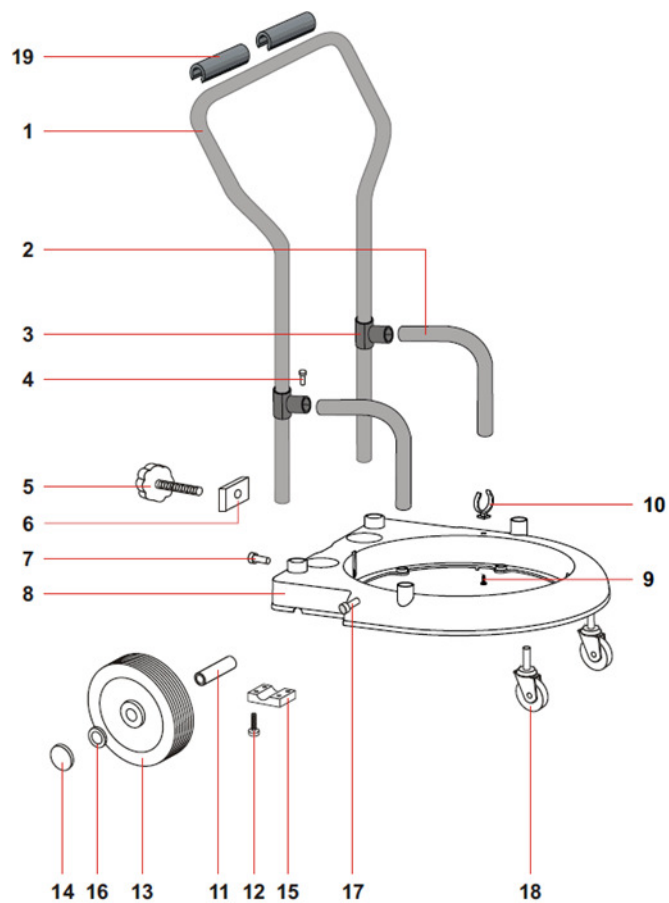
**MANGUERA DE DRENADO**

POS.	REF.	DESCRIPCION	Cant.
1	2764/C	PLAST.CAP D.40 X 35 W/OR COMPL.	1
2	2812	TIE ROD CAP	1
3	2765	DRAIN PIPE D.34 L=600	1
4	2889	PULLEY 1-1/4"	1
5	2888	RUBBER HOLDER UNION	1
6	7798	OR 28 X 2,5 NBR	1
7	256	GASKET 60X40X4	3
8	2890	RUBBER HOLDER PLAST.COUPLING. 90°1-1/4	1
9	3592	CLAMP 300X9	1



### TANQUE DE SOLUCION DROP - S

POS.	REF.	DESCRIPCION	Cant.
1	1439	CLEAR WATER TANK	1
2	2689	COMPL.D IP FILTER	1
3	138/L	FAIR LE AD	1
4	1526	HYDROLITIC TUBE 8 X 5 L=1100	1
5	257	TANK CAP	1
6	954	STEEL WASHER D.8	1
7	2660	STRICK CLIP 7-9	1
8	3664/OTT	BRASS QUICK COUPLING P.G5,2	1
9	835	FILLING PIPE 1-1/4"	1
10	256	GASKET 60X40X4	1
11	834	RING 1-1/4"	1
12	255	CAP GASKET	1
13	833	CAP 1-1/4"	1
*	3036	DIP L OCKIN G FILTER	1



### CARRO DROP - S

POS.	REF.	DESCRIPCION	Cant.
1	918-1 V	MARKET HANDLE 400 BLACK VARN.	1
2	917 V	VARNISHED SUPPORT TUBE	2
3	913	"T" TUBE	2
4	1302NE	RIVET 5X15 BLACK	2
5	914	HAND-WHEEL M 8X60	1
6	1403	LOCKING THREADED PLATE	1
7	1302NE	RIVET 5X15 BLACK	2
8	21567NE	TROLLEY BODY 400 MARKET BLACK	1
9	1005	SCREW PAT TMT PHL 5X14 ZN BLACK	1
10	2788	LIRA CLAMP D.34	1
11	30039	WHEEL PIVOT D.18X105	2
12	3189	SCREW M 5X30 UNI 7687	8
13	904	REAR WHEEL D.200	2
14	3835NE	WHEEL CAP D.200/250 BLACK	2
15	2967	LOCK PIVOT BRACKET	2
16	2557	BLOC D.18	2
17	1302NE	RIVET 5X15 BLACK	2
18	20418	FRONT WHEEL D.80 W/PIVOT	2
19	6250	PLAST.TROLLEY HANDLE	2