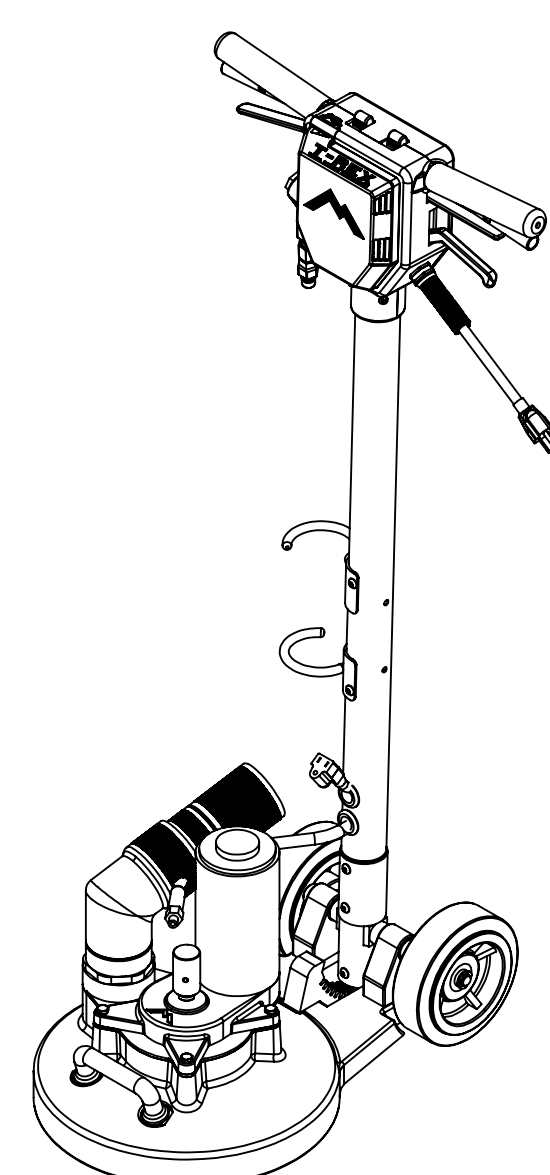


ITEM NO.	PART NO.	DESCRIPTION	QTY.
1	H341	handle pivot, floor machine	1
2	H089	axle, 9.63" x .50" dia	1
3	H267	pivot support, t-rex	2
4	H065	bushing, sleeve, 5/8 i.d. x 1.25" long	2
5	H066	bolt, shoulder 5/8" x 1.25", 1/2-13 thrds	2
6	H427	washer, wave	2
7	H665	wheel, 6" dia, 2" width, 1/2 axle	2
8	H042	c-clip, 12mm, external	2
9	H157	spring, handle adjustment	1
10	H847	bushing, locking piston	1
11	H152	retaining ring, internal 1 1/2"	1
12	H844	locking piston, handle adj.	1
13	H148	washer, 5/16", narrow	7
14	H843	locking arc, handle adj, floor machine	1
15	H421	washer, 5/16" lock, s/s	10
16	H151	bolt, 5/16-18 x 3/4" Long SHCS	10
17	G107	o-ring, 13/16" o.d. x 1/8" width	1
18	H705	bolt, giude, locking piston	1
19	A102A	assembly, cleaning head, TRex JR	1
20	G014	seal, felt, T-REX	1
21	H126	plate, seal, head/ bell housing	1
22	P516A	bell housing and chasis, t-rex	1
23	H768	bolt, 1/4-20 x 3/4" serrated hex flange, zinc	2
24	H485	handle, aluminim grip, black	1
25	G023A	o-ring, 6.5" o.d. x 1/8" width	1
26	C311B	motor & transmission, TRex JR	1
27	B139	rotary union	1
28	P517	vacuum sight tube w/ 2" fw mpt Cuff-Lynx	1
29	H230	screw, 10-32 x 1/2" phil pan head, s/s	7
30	H882	screw, 8 x 3/4 phil pan head, type a, s/s	2
31	P501	cover, controller board, t-rex	1
32	E382	pcb speed control	1
33	H258	switch box, T-REX	1
34	P574	knob, clear plastic, t-rex potent	1
35	E363	potentiometer, slide	1
36	B101	qd, brass, 1/4" m	1
37	B247	filter, in-line, 100 mesh, 1/4" mpt x fpt	1
38	B194	nipple, hex, 1/4" mpt x 1/8" mpt	2
39	B237A	valve, flow, 1/8"	1
40	B100A	swivel, high pressure, stainless steel	1
41	B130	45 deg, street elbow, brass, 1/4" male	1
42	B133-A	valve, brass, K, w/ trigger for wands	1
43	B103	elbow, brass, 90 deg, 1/4"mpt x 1/4" fpt	1
44	H136	Cuff-Lynx, 2" hose x 2" male swivel	1
45	AH110	sol hose, 1/4" x 48" (OAL)	1
46	H203	bolt, 1/4-20 x 1-1/4" hex head, s/s	4
47	H215	nut, hex, 1/4-20 s/s	1
48	H047	screw, 1/4-20 x 1/2", button, s/s, blk oxide	10
49	H164	grommet, 5/8" ID	2
50	E349	cord, female 38", 14/3 IEC320C13 plug	1
51	H247A	hook, hose restraint, T-REX	2
52	H159	cable, handle adj, floor machine	1
53	H216	nut, lock, 1/4-20, nylon insert, s/s	1
54	H458	nut, lock, 10-32, thin, nylon insert	2
55	P529	spacer, lever, handle adj.	1
56	H257	lever, solution, T-REX	1
57	H167	switch, floor machine	1
58	H127	bracket, mount, switch	1
59	H640	washer, internal star, 3/8" zinc	1
60	H384	washer, 3/8 flat, s/s	1
61	H263	lever, switch, T-REX	1
62	G040	grip, handle, floor machine	2
63	P522	handle, back half, T-REX	2

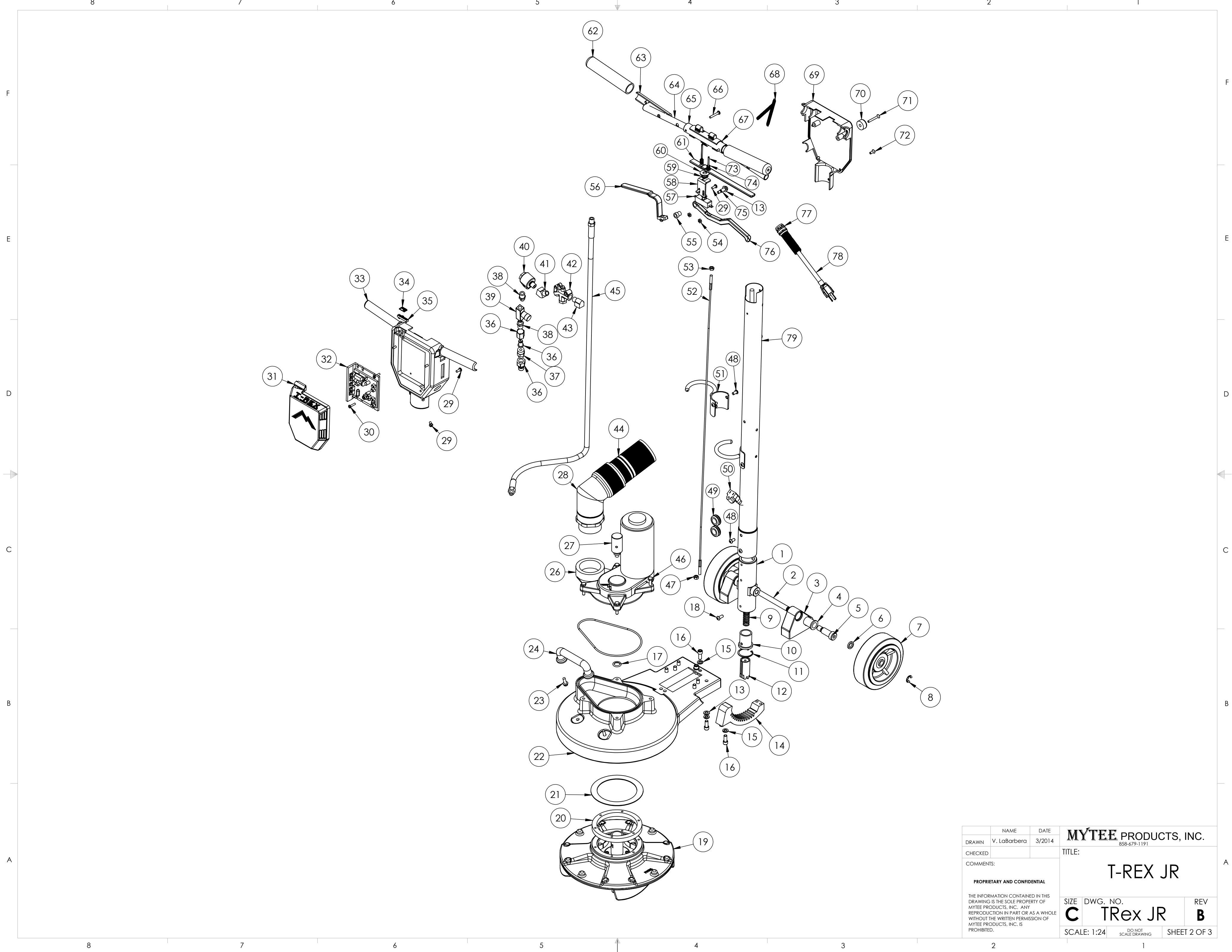
ITEM NO.	PART NO.	DESCRIPTION	QTY.
64	H261-B	handle, reinforcement, side, T-Rex	2
65	H261-A	handle, reinforcement, center, T-Rex	1
66	H222	screw, 10-32 x 1-1/4" phil pan head, s/s	2
67	P541	lockout, floor machine	1
68	H168	spring, lockout, floor machine	2
69	H260	cover, switch box, T-REX	1
70	G087	bumper w washer	2
71	H017	screw, 10-32 x 1.5", FHSCS, s/s	2
72	H018	screw, 10-32 x 1/2", FHSCS, s/s	3
73	H161	roll pin, 1 3/4" x 1/8"	2
74	H160	spring, switch/lever	2
75	H149	bolt, 5/16" shldr x 5/8" w/ 1/4-20 thrd	1
76	H839	lever, handle adj., floor machine	1
77	H144	strain relief, power cord, metal	1
78	E384	power cord, end, 15.5", 14/3	1
79	H249B-ss	tube, t-rex	1

ITEMS NOT SHOWN

PART NO.	DESCRIPTION	QTY.
P576A	star protector, TRex JR	1
E617A	power cord, ext, 25', 16/3 black	1
H051	wrench, flat, 5/8"	1
H053	tool, star remover, TRex	1
P568A	cord lock, "S", TRex	1
PH648	lubricant, super lube oil, 4 oz tube	1
ADM-TREX JR	manual, TRex JR	1



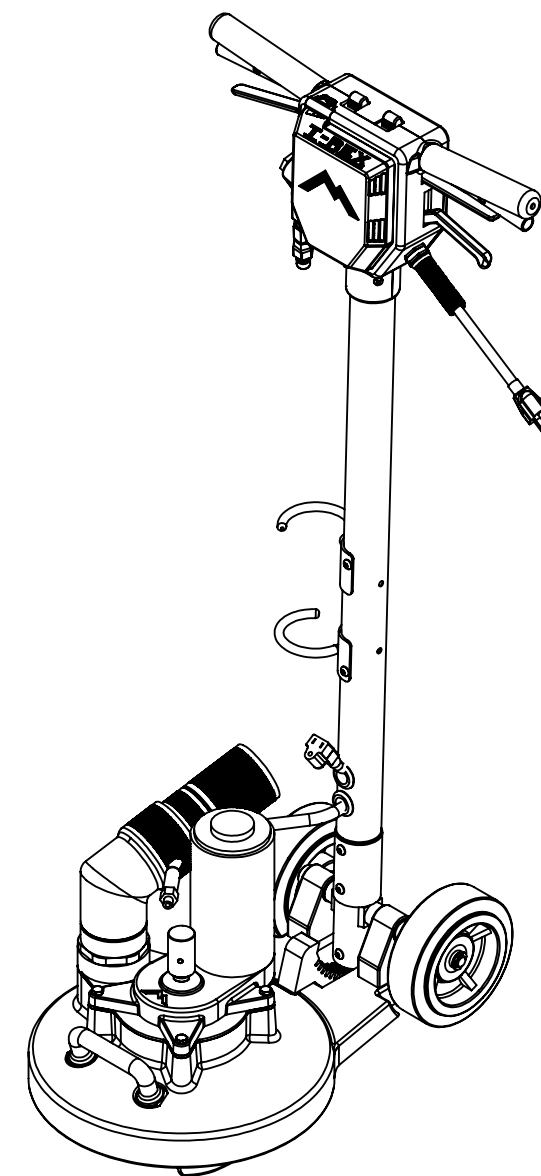
NAME	DATE	MYTEE PRODUCTS, INC. 858-679-1191	
DRAWN V. LaBarbera	3/2014	TITLE:	
CHECKED		T-REX JR	
COMMENTS:		SIZE DWG. NO.	REV
<small>PROPRIETARY AND CONFIDENTIAL</small> <small>THE INFORMATION CONTAINED IN THIS DRAWING IS THE SOLE PROPERTY OF MYTEE PRODUCTS, INC. ANY REPRODUCTION IN PART OR AS A WHOLE WITHOUT THE WRITTEN PERMISSION OF MYTEE PRODUCTS, INC. IS PROHIBITED.</small>		C	B
		SCALE: 1:24	SHEET 1 OF 3



	NAME	DATE	MYTEE PRODUCTS, INC.		
DRAWN	V. LaBarberga	3/2014	858-679-1191		
CHECKED			TITLE:		
COMMENTS:	T-REX JR				
<small>PROPRIETARY AND CONFIDENTIAL</small> <small>THE INFORMATION CONTAINED IN THIS DRAWING IS THE SOLE PROPERTY OF MYTEE PRODUCTS, INC. ANY REPRODUCTION IN PART OR AS A WHOLE WITHOUT THE WRITTEN PERMISSION OF MYTEE PRODUCTS, INC. IS PROHIBITED.</small>			SIZE	DWG. NO.	REV
			C	TREX JR	B
SCALE: 1:24			DO NOT SCALE DRAWING	SHEET 2 OF 3	

REVISIONS

REV.	DESCRIPTION	DATE	APPROVED
OD	ORIGINAL DRAFT	3/2014	JFL
A	ADDED VAC HOSE SYSTEM	4/22/2015	ML
B	REMOVED VAC HOSE SYSTEM; ADDED H247A & H047	11/2/2015	ML



	NAME	DATE	MYTEE PRODUCTS, INC. <small>858-679-1191</small>	
DRAWN	V. LaBarbera	3/2014	TITLE:	
CHECKED			T-REX JR	
COMMENTS:				
PROPRIETARY AND CONFIDENTIAL			SIZE	DWG. NO.
THE INFORMATION CONTAINED IN THIS DRAWING IS THE SOLE PROPERTY OF MYTEE PRODUCTS, INC. ANY REPRODUCTION IN PART OR AS A WHOLE WITHOUT THE WRITTEN PERMISSION OF MYTEE PRODUCTS, INC. IS PROHIBITED.			C	TRex JR
			SCALE: 1:24	DO NOT SCALE DRAWING
				REV B
				SHEET 3 OF 3