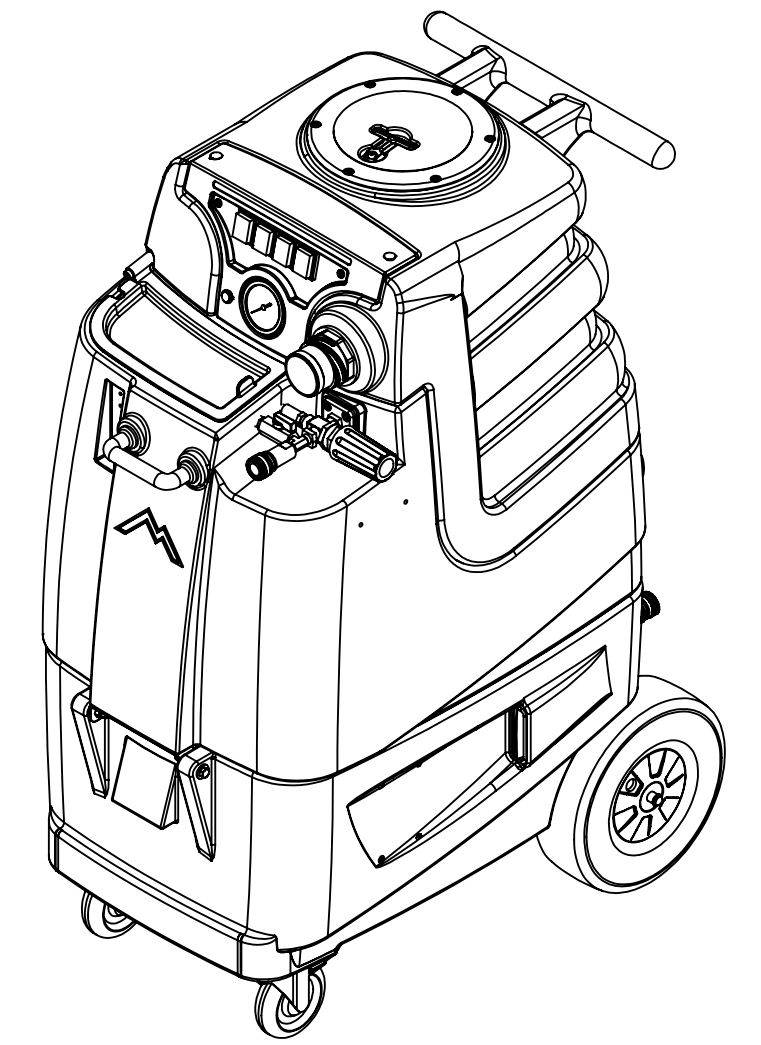


ITEM NO.	PART NO.	DESCRIPTION	QTY
1	H212	flat washer, 9/16"ID x 1 1/16"OD, AN960-C916	2
2	B199	coupler, 1/2" fpt x 1/4" fpt	3
3	B644	adapter, brass, 1/2" barb x 1/4" mpt	1
4	B173	ferrule, 1/2", brass	10
5	PH615-30	sol hose, 1/2", 3045psi, black	1
6	H273	nut, kep, #10-32 zinc	14
7	H210	washer, 1/4" flat, s/s	30
8	H186	screw, 10-32 x 3/4, phil flat full thread	6
9	C381	pump out, 115v	1
10	PH615-37	sol hose, 1/2", 3045psi, black	1
11	B160	adapter, brass, 1/2" barb x 3/8" fsw, ball end	4
12	H042	c-clip, 12mm, external	2
13	H109	wheel, 10", foam filled	2
14	H232	axle, 19.60" x .50"	1
15	H254	washer, axle, cut 1/2" id	4
16	P514	vent, side, LTD	2
17	H668	caster, 4", black hub & gray tread	2
18	H342	bolt, 1/4-20 x 1" hex head, s/s	8
19	H216	nut, lock, 1/4-20, nylon insert, s/s	14
20	B105	bushing, brass, 3/8"mpt x 1/4"	5
21	B107	nipple, brass, 1/4"m, hex	4
22	B103	elbow, brass, 90 deg, 1/4"mpt x 1/4" fpt	4
23	B652	elbow, brass, 90 deg, 3/8"mpt x 1/4"mpt	3
24	H202	bolt, 1/4x20x3/4" hex head	4
25	B169	tee, 3/8" Street Tee, MPTxFPTxFPT	1
26	PH615-7	sol hose, 1/2", 3045psi	1
27	PH615-19	sol hose, 1/2", 3045psi, black	1
28	B142A	coupling, brass, 1/4" fpt x 1/4" fpt	2
29	C359A	pump, 1000 psi	1
30	P511	LX series base	1
31	PH615-32	sol hose, 1/2", 3045psi, black	1
32	B123	adapter, brass, 1/2" barb x 1/4" fpt	1
33	G068	bumper, 7/8" x 1/4" head	2
34	H486	latch, front	2
35	H230	screw, 10-32 x 1/2" phil pan head, s/s	18
36	H221	nut, lock, 1/2" steel	2
37	H220	fitting, strain relief, cord	2
38	E550	power cord, pigtail, 30", 12/3, black	2
39	E564	controller, circuit light	1
40	H039	plate, auto fill/ pump out	1
41	B656A	ball valve, 1/2" m x 1/2" f	1
42	B205B	QD, 1/2" npt x 3/4" mgh, pump-out	2
43	B204	qd, 3/4" female x female garden hose	2
44	H541A	valve, float, autofill	1
45	B198	adapter, 3/4" fgh x 1/2" mpt, w/ gasket	1
46	B167	street elbow, 1/2" fpt x 1/2" mpt	1
47	B303	nipple, 3" x 1/4" npt x 1/4" npt	3
48	B186	elbow, brass, 90 deg, 3/8"mpt x 3/8" fmpt	3
49	H299	washer, 11/16" id x 1-1/2" od x .075, s/s	9
50	B216	nipple, brass, 3/8" x close	2
51	B210	bushing, brass, 1/2"mpt x 3/8" fpt, hex	2
52	B119A	filter, strainer, 1/2"	1
53	H201	bolt, 1/4-20 x 1/2", hex head, zinc	2
54	H213	washer, 1/4" lock, s/s	8
55	H378	bracket, front hinge, sp/fb	1
56	H204	bolt, 1/4-20 x 1 3/4" hex head, s/s	2
57	H485	handle, aluminum grip, black	1
58	G052	washer, buna 1-1/8" od x 3/16" id	2
59	H211	washer, 1/4" id x 1" od, flat, s/s	2
60	H768	bolt, 1/4-20 x 3/4" serrated hex flange, zinc	2
61	H650	bolt, 5/16" shoulder x 1-1/2" lg, alloy	1
62	P513	solution tank lid, LTD	1

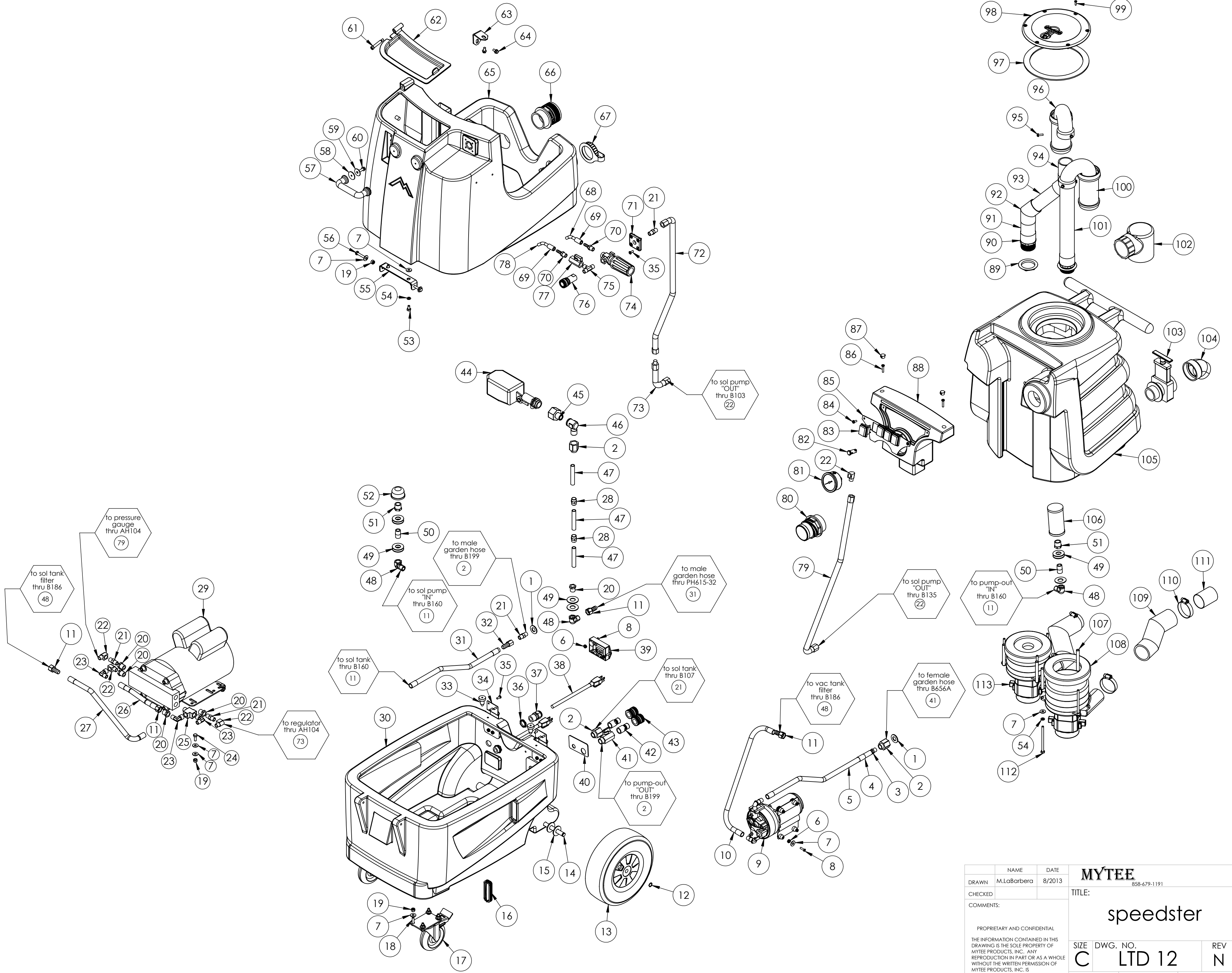
ITEM NO.	PART NO.	DESCRIPTION	QTY.
63	H390A	bracket, "L"	2
64	H770	bolt, 1/4-20 x 1/2" serrated hex flange, zinc	4
65	P509	LX series sol tank	1
66	H124	Cuff-Lynx, 2" mpt x 2" female cuff	2
67	G036	cap, 2.5" threaded, tethered	1
68	PH634-20	sol hose, 1/4", 300 PSI	1
69	B170	ferrule, 1/4" brass	2
70	B109	adapter, brass, 1/4" barb x 1/4" mpt	2
71	H484	plate, mounting, QD	1
72	AH117	sol hose, 1/4" x 39", 1/4" fsw x 1/4" fpt	2
73	AH104	sol hose, 3/8" x 10", (OAL)	2
74	C359C	regulator, 1000 psi, white spring	1
75	B135	tee, brass, 1/4" mpt	1
76	B102	qd, brass, 1/4" f x 1/4" fpt	1
77	B656	ball valve, 1/4"	1
78	PH634-36	sol hose, 1/4", 300 PSI	1
79	AH117	sol hose, pulse, 3/8" x 49", 1/4" fsw x 1/4" fsw	1
80	H135	Cuff-Lynx, 2" m cuff x 2" mpt	1
81	H308D	gauge, pressure, 2000 PSI	1
82	E512B	light, indicator, 125v (amber)	1
83	E515	switch, rocker, 2 position	4
84	H029	plastite screw, 10 x 1/2"	2
85	H074	plate, switch, ltd5, ltd12	1
86	H031	plastite screw, 10 x 1"	2
87	H434	plug, vent, heyco, 1/2"	2
88	P512	LX series switchbox	1
89	H314	nut, lock, 1-1/2", steel	2
90	P520	adapter, pvc, 1-1/2" mpt x 1-1/2" fms	2
91	PH633-4	pipe, pvc, 1-1/2"	1
92	P503	adapter, 1.5" pvc, 45 deg, fslip x fslip	2
93	PH633-6	pipe, pvc, 1.5"	1
94	PH633-03	pipe, pvc, 1-1/2"	1
95	H343	screw, 10 x 5/8" hex head, zinc	6
96	P755	elbow, U, 180, 1-1/2", float	2
97	G091	gasket, 7", vac lid	1
98	G090	lid, vac tank, clear, 7"	1
99	H304	screw, #8 x 5/8 phil oval, s/s	6
100	H490	float, 2" / 1.5" ball style	2
101	PH633-13	pipe, pvc, 1-1/2"	1
102	A926	elbow, inlet assembly 2"	1
103	H225	valve, drain, 1-1/2"	1
104	H226	spout, drain, 45 degree	1
105	P510	LX series vac tank	1
106	H333	mesh filter, auto dump, 1/2" npt	1
107	H503	vac support, 3 stage, 3.25", no thrds	6
108	G004	gasket, vacuum motor	2
109	PH628-7	vac hose, 2", black, wire reinforced	2
110	H217	clamp, hose, 2-1/4 dia	4
111	H194	coupler, 2" dia x 2.5" length, s/s	2
112	H096	bolt 1/4-20 x 4, s/s	6
113	C302LA	vac motor, 3 stage, low amp	2

ITEMS NOT SHOWN

PART NO.	DESCRIPTION	QTY	MSRP
E530	power cord, ext 50', 12/3, black	2	
E356	harness, electrical	1	
G008	piglet filter	1	
G076	filter bag, 3.5" metal o-ring, mesh bag	1	
H110	Cuff-Lynx, 2: hose x 2" fem swivel	1	
H141	Cuff-Lynx, 2: x 1.5" reducer	1	
H375	hanger, wire formed, hose	1	
P568A	cord lock, S-type	2	



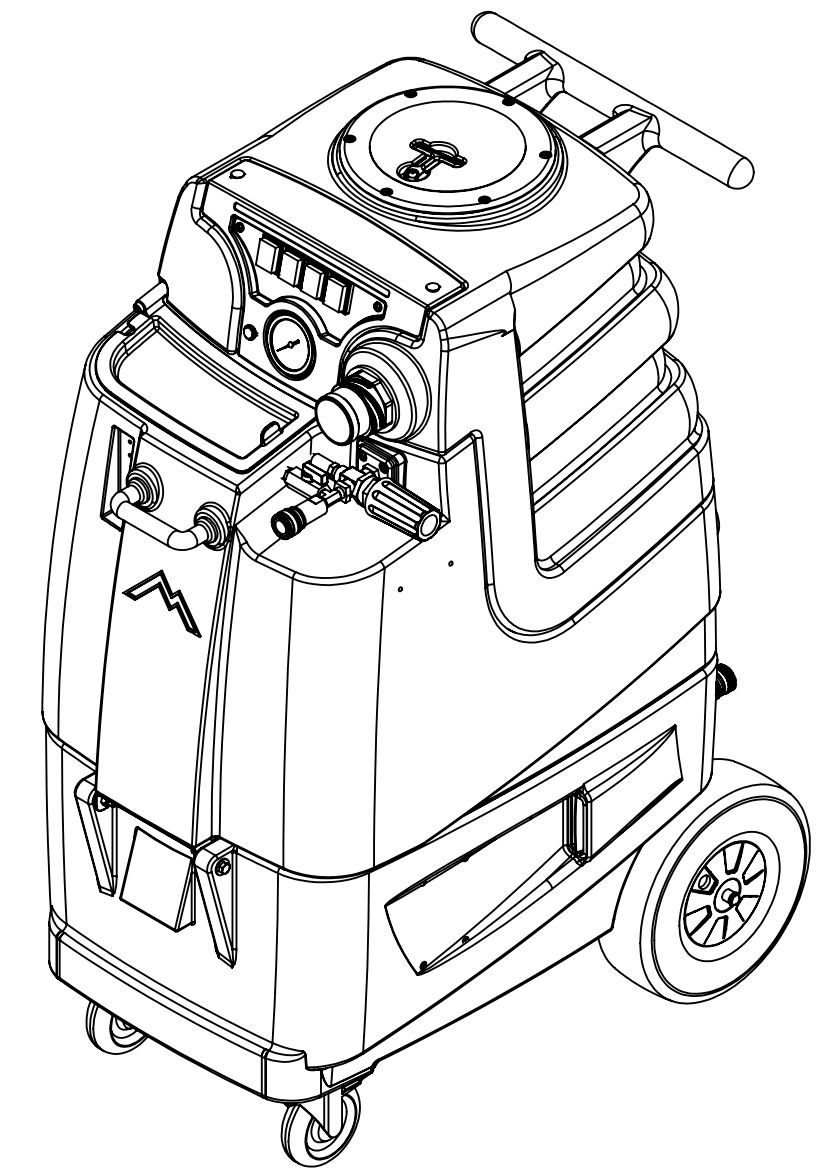
NAME	DATE	MYTEE 858-679-1191	
DRAWN M.LaBarbera	10/2013	TITLE: speedster	
CHECKED		SIZE	DWG. NO.
COMMENTS:		C	LTD 12
<small>PROPRIETARY AND CONFIDENTIAL THE INFORMATION CONTAINED IN THIS DRAWING IS THE SOLE PROPERTY OF MYTEE PRODUCTS, INC. ANY REPRODUCTION IN PART OR AS A WHOLE WITHOUT THE WRITTEN PERMISSION OF MYTEE PRODUCTS, INC. IS PROHIBITED.</small>		REV	N
SCALE: 1:12		DO NOT SCALE DRAWING	SHEET 1 OF 3



	NAME	DATE	MYTEE	
DRAWN	M.LaBarbera	8/2013	858-679-1191	
CHECKED			TITLE:	
COMMENTS:	speedster			
PROPRIETARY AND CONFIDENTIAL THE INFORMATION CONTAINED IN THIS DRAWING IS THE SOLE PROPERTY OF MYTEE PRODUCTS, INC. ANY REPRODUCTION IN PART OR AS A WHOLE WITHOUT THE WRITTEN PERMISSION OF MYTEE PRODUCTS, INC. IS PROHIBITED.		SIZE	DWG. NO.	REV
		C	LTD 12	N
		SCALE: 1:12	DO NOT SCALE DRAWING	SHEET 2 OF 3

REVISIONS

REV.	DESCRIPTION	DATE	APPROVED
OD	ORIGINAL DRAFT	-	JFL
A	-	-	JFL
B	-	-	JFL
C	REPLACED VAC STACK	6/2013	JFL
D	REPLACED G003 W GO22	8/2013	JFL
E	REPLACED H033 W H342, ADDED H210 & H216	10/8/2013	JFL
F	G021 REPLACED W G097	10/28/2013	JFL
H	UPDATED ITEMS NOT SHOWN	1/13/2014	JFL
I	H347 REPLACED w FERRULE	3/7/2014	ML
J	REPLACED H219 W H042	8/8/2014	ML
K	ADDED AH104	11/25/2014	ML
L	UPDATED PLUMBING	10/7/2015	ML
M	REMOVED ELECTRICAL FLOAT	3/9/2016	ML
N	NEW PUMP, REMOVED CHEMICAL INJECTOR	10/19/2017	ML



	NAME	DATE	MYTEE	
DRAWN	M.LaBarbera	10/2013	858-679-1191	
CHECKED			TITLE:	
COMMENTS:			speedster	
<small>PROPRIETARY AND CONFIDENTIAL THE INFORMATION CONTAINED IN THIS DRAWING IS THE SOLE PROPERTY OF MYTEE PRODUCTS, INC. ANY REPRODUCTION IN PART OR AS A WHOLE WITHOUT THE WRITTEN PERMISSION OF MYTEE PRODUCTS, INC. IS PROHIBITED.</small>			SIZE	DWG. NO.
			C	LTD 12
			SCALE: 1:12	DO NOT SCALE DRAWING
			REV	N
			SHEET 3 OF 3	